

## SOLICITATION ADDENDUM

Date: **May 25, 2018**  
Subject: **Post and Accessories**  
Solicitation Number: **6100045791**  
Due Date/Time: **May 25, 2018 at 10:00 A.M. EDT**  
Addendum Number: **2**

---

To All Suppliers:

The Commonwealth of Pennsylvania defines a solicitation “Addendum” as an addition to or amendment of the original terms, conditions, specifications, or instructions of a procurement solicitation (e.g., Invitation for Bids or Request for Proposals).

*List any and all changes:*

For Material Number 298671 Lot 1, further specification clarification has been included on the attached document.

Bid opening has been extended till 2:00 PM EDT Today May 25<sup>th</sup>, 2018.

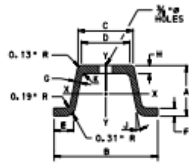
If you have already submitted response to the original solicitation you may either submit a new response or return this addendum with a statement that your original response remains firm, by the due date.

Type of Solicitation: Electronic Bid (SRM) - Review the Questions section of your solicitation response to ensure you have responded, as required, to any questions relevant to solicitation addenda issued subsequent to the initial advertisement of the solicitation opportunity.

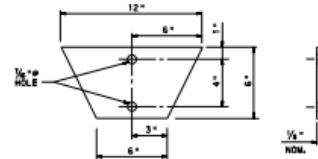
Except as clarified and amended by this Addendum, the terms, conditions, specifications, and instructions of the solicitation and any previous solicitation addenda, remain as originally written.

Respectfully,

Name: Michelle L. Scott  
Title: Commodity Specialist  
Phone: 717-703-2942  
Email: Miscott@pa.gov



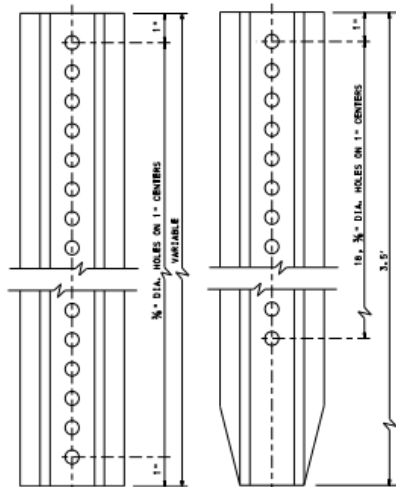
W WEIGHT LBS./FT.	DIMENSIONS (INCHES)									
	A	B	C	D	E	F	G	H	J	
2.5	1.56	3.13	1.25	1.06	0.83	0.16	0.13	0.15	12.5*	0.13 R
4.0	1.75	3.50	1.47	1.41	0.72	0.26	0.18	0.23	11.5*	0.19 R
W ± 3.5%										



ANCHOR PLATE

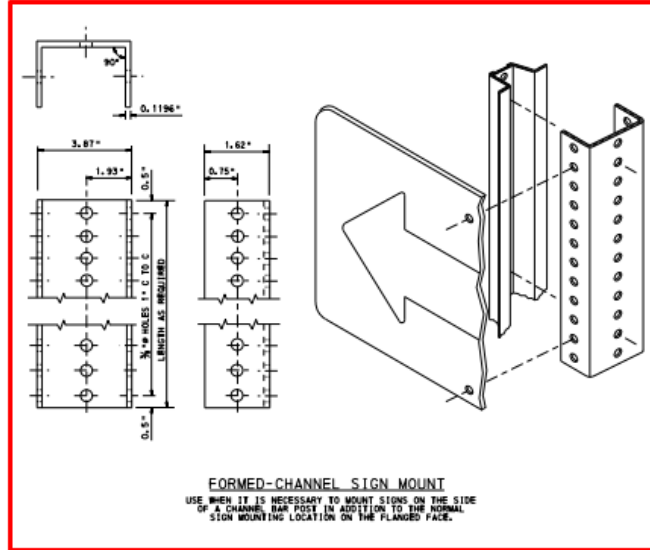
NOTES:

1. MATERIALS AND WORKMANSHIP SHALL BE IN ACCORDANCE WITH PUB. 406.
2. FORMED-CHANNEL SIGN MOUNTS SHALL BE MILD STEEL.
3. ANCHOR BOLTS SHALL BE 3/4" - 16 UNC x 1.5" FULLY THREADED, GRADE 9 HEX HEAD. A FLANGED ANCHOR BOLT MAY BE SUBSTITUTED FOR THE STANDARD ANCHOR BOLT AND FLAT WASHER.
4. WASHERS SHALL BE 3/4" GRADE 9 PLATED.
5. LOCKWASERS SHALL BE 3/4" - 16 UNC THREADS, HEX HEADRD.
6. ANY OTHER DEPARTMENT APPROVED BREAKAWAY CONNECTION APPROVED FOR THIS KIND OF POST MAY BE SUBSTITUTED FOR THE UNIVERSAL SPACER.
7. SEE SHEET 6 FOR SPACER AND ANCHOR BOLT DETAILS.



SIGN POST

ANCHOR POST  
FIRST AND FIFTH HOLES TO BE INDICATED SLOTS 3/4" x 0.5"



FORMED-CHANNEL SIGN MOUNT  
USE WHEN IT IS NECESSARY TO MOUNT SIGNS ON THE SIDE OF A CHANNEL BAR POST IN ADDITION TO THE NORMAL SIGN MOUNTING LOCATION ON THE FLANGED FACE.

COMMONWEALTH OF PENNSYLVANIA  
DEPARTMENT OF TRANSPORTATION  
BUREAU OF MAINTENANCE AND OPERATIONS

POST-MOUNTED SIGNS,  
TYPE B

CHANNEL BAR POSTS  
(ROLLED STEEL RAILS)  
MATERIAL DETAILS

RECOMMENDED JUN. 13, 2013	RECOMMENDED JUN. 13, 2013	SHT. 5 OF 9
<i>[Signature]</i>	<i>[Signature]</i>	TC-8702B
CHIEF, TRAFFIC ENGINEERING AND PERMITS SECTION	CHIEF, HIGHWAY SAFETY AND TRAFFIC OPERATIONS DIVISION	